

AUDI Wireless CarPlay Decoder Manual

table of Contents

• 1. Product Description	Autolink function introduction
– 1.1 Product Introduction	– 2.4 Youtube function introduction
– 1.2 Introduction to the functions of the central control panel keys	– 2.5 USB HD playback function introduction
– 1.3 Introduction to steering wheel key functions	– 2.6 Firmware Upgrade Introduction
– 1.4 Wiring diagram of Carplay box	• 3. Reverse setting instructions
– 1.5 Model dial table	• 3.1 Carplay setting reverse function introduction
• 2. Product function catalog	
– 2.1 Wireless/Wired Carplay function introduction	
– 2.2 Wireless/Wired Android Auto function introduction	
– 2.3 Wireless AirPlay/Wired	

product manual

1.1 Product Introduction



- | | |
|---|--|
| 1. Product model: GPOA689-Q5 | 2. Product weight: 0.95KG/pcs (including wire) |
| 2. Product size: 14.8cm X9.3cm X2.4cm | |
| Product Features: | |
| 1. Support wireless/wired CarPlay function | adjustment |
| 2. Support wired Baidu Carlife function | 9. Support reversing radar and track display |
| 3. Support wireless Airplay function | 10. Supports foresight input, exits the reverse and automatically switches to foresight, with optional lead time |
| 4. Support wireless/wired Android auto function | 11. Support to adjust the microphone sound quality |
| 5. Support wired Autolink function | 12. Support user firmware upgrade |
| 6. Support USB to play video | 13. Support boot logo and icon logo modificati |
| 7. Support HDMI video input display | |
| 8. Support lossless sound quality, perfect presentation, EQ | |

1.2 Introduction to the functions of the central control panel keys



Due to the large difference of Audi central control panel, the definition of carplay in operation is different;

Carplay toggle display key: long press 3S

Q5 high configuration, old Q7, A6, A8: NAV key (⑤)

Q5 low configuration: NAV key (①), CAR key (⑦), MEDIA key (⑥), INFO key (③)

A3, B9, Q3: MEDIA key (⑥)

Return key (④): Short press is for return. Long press 5-8S to restart the carplay decoder. Long press 5-8S within 10S after the box is powered on to enter the upgrade mode

Q5/A5/A4 low configuration: RETUR key

Other models: BACK key (④)

Knob key (⑨):

Left and right rotation function: operate under the interface of carplay, carlife and Android auto

Confirmation function: Short press is the confirmation function. Long press for about 5s on the carplay interface can wake up Siri voice

Carplay music up and down function (⑦⑧)

1. 3 Introduction to steering wheel key functions



We only define the right button function of the steering wheel;

NAV key (①): press and hold the NAV key to switch between the carplay and the original vehicle interface

Voice key (②): Long press the voice key to wake up the carplay Siri voice

1. 4 Wiring diagram of Carplay box

Audi high configuration wiring diagram

1

Installation Precautions:

1. Please turn off the car and power off before wiring;
2. Please dial the corresponding dialing code on the decoder box first, and then power on the decoder. (If you change the dial code on the box while the power is on, there will be a black screen for switching. At this time, please unplug the power cord of the box and it will return to normal)

2

Audi B9 complete set of products

Power Cable

LVDS line

Antenna

CarPlay Decoder

USB cable

3

The LVDS cable is transferred to the red/gray part on the host side of the original car.

Original car power cord

Notice:

If there is a cylindrical fiber optic cable in the main head of the original car power cable, you need to transfer the optical fiber cable to the main head of the carplay power cable.

4

plug-in decoder box

Q1: Reserved microphone connector

CarPlay power cable

Connect the original car power cord

5

Plug-in decoder LVDS interface

Plug in the LVDS cable unplugged from the original car host

Add a microphone connector

6

DIP table

Audi dials a lot, please refer to the dial table!

1. Please pay attention to dial the code first, and then plug in the power cord of the box.
2. Please use the corresponding model to dial the code. If there is any problem, please try to replace the same wire and other dial codes with the same screen parameters.

7

Connect the power cord unplugged from the original car host

Do not stick iron.

USB cable

8

Finish

9

1.5 Model dial table

Model	Support Year	system	Code meter	decoder	Wire material No
Q5	2013-2018	3GMMI	00000 0	Q5U decoder	Q5U
S5/A5	2013-2014 7 inch	3GMMI			
A4L	2016	3GMMI			
S4/S5/A4/A5 high	2012-2016	3GMMI			
S4/S5/A4/A5	2010-2011	3GMMI	00011 1		
Q5 high configuration old style	2010-2012	3GMMI			
S6/S7/A6/A7	2012-2016	3GMMI	00000 0		A6
A8/A8L	2010-2018 7 inch	3GMMI	00000 1		A8
S6/A6 (C6)	2010-2011	3GMMI	00110 1		C6
Q7 老款	2010-2015	3GMMI	00001 0		
S6/S7/A6/A7	2016-2018	3GMMI knob, MIB2 interface	00111 1		A7C
S3/A3	2014-2016 5.8 "/6.3" (Brush A3 fixed resolution software)	MIB	11001 1		B9
S3/A3	2014-2016 7 inch	MIB	11100 1		
S3/A3	2017-2018 6.3 inch	MIB	11011 0		
S3/A3	2017-2018 7 inch	MIB	11100 0		

Q2L	2019 7 inch	MIB2			
B9/A4L/S5/A5	2014-2019 7 inch	MIB2	11010 0		
Q7 新款	2016-2018	MIB2	11101 1		
Q5L 新款	2018-2019 7 inch	MIB2			
Q3 navigation version	2014-2018 7 inch (Brush 7-inch fixed screen parameters)	2GMMI	00110 0		Q3H
Q3 no navigation version	2014-2018 6.3 inch	2GMMI	00110 0		Q3
A1	2013-2018 5.8/6.3 inch (Brush A1 fixed resolution software)	2GMMI			
Q5/A5/A4 Low configuration	Previous 6.3 inch screen of 18 models	2GMMI	00010 1	Q5L decoder	Q5L
A4L/A5	2014-2019 8.3 inch	MIB2	11010 0	Q7 8.3 Decoder	B9
A4	2018-2019 8.3 inch	MIB2			
Q7 New	2016-2019 8.3 inch	MIB2			
A3	2017-2018 8.3 inch	MIB2	11100 0		
Q2L	2019 8.3 寸	MIB2			
Q5L New	2018-2019 8.3 inch	MIB2	11101 1		

Product function catalog

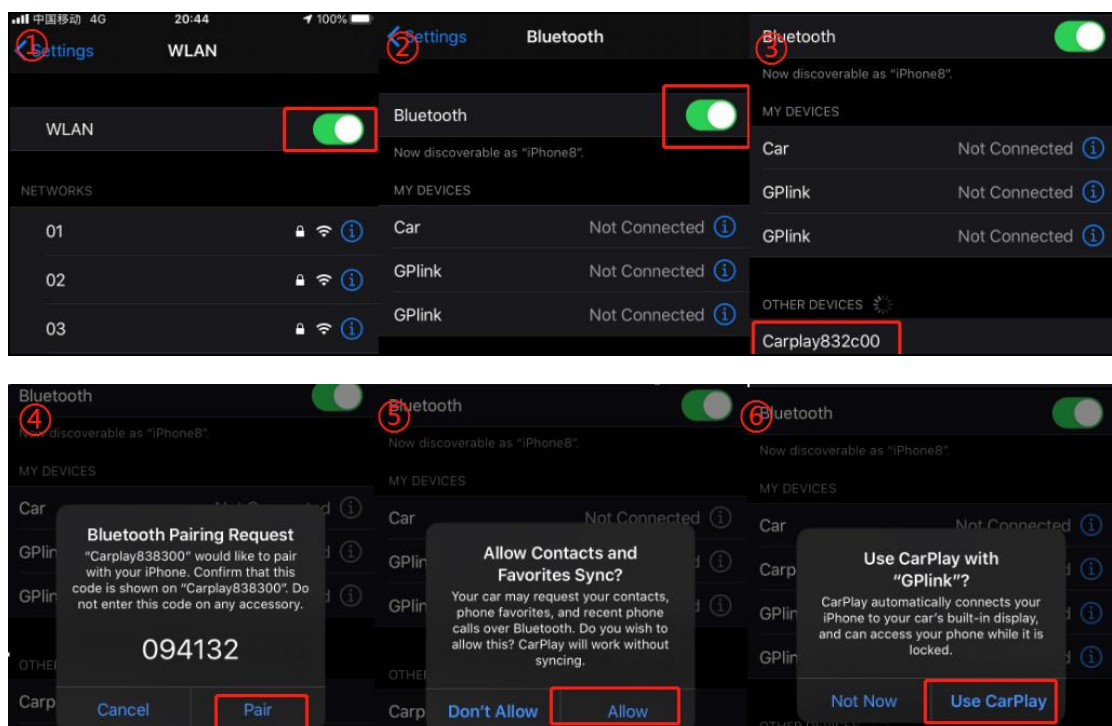
2.1Wireless/Wired Carplay function introduction

CarPlay is an Apple system that interconnects a user's Apple phone with a car machine. The connection methods are wireless and wired.

Wireless carplay connection method: mobile phone connection and car machine connection

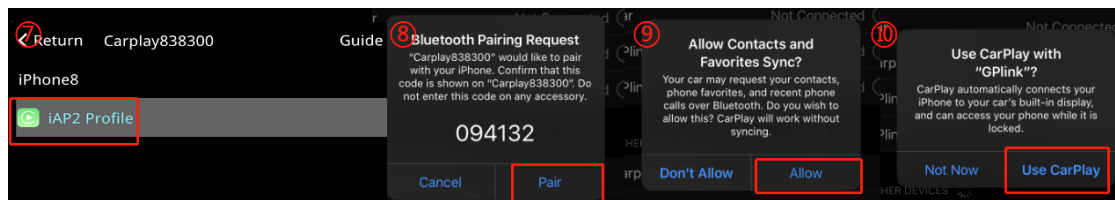
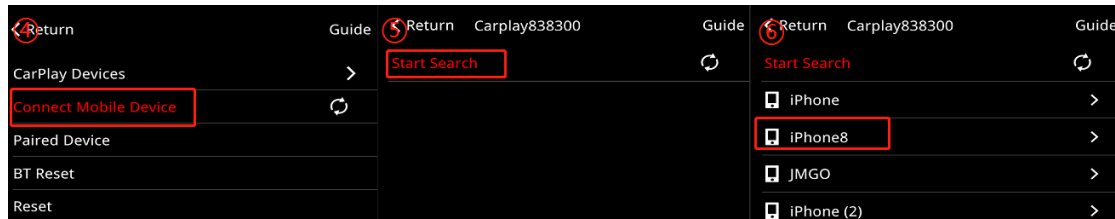
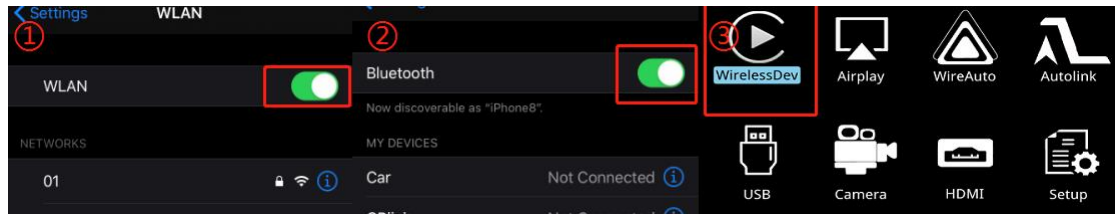
Wireless carplay mobile terminal pairing connection steps:

1. Press the menu key to enter the carplay main interface
2. Turn on WiFi on the phone
2. Turn on Bluetooth on the mobile phone
3. Bluetooth endpoint search
5. The decoder Bluetooth device (carplayxxxx) is found
6. Click on the mobile phone to search for Bluetooth devices and select point pairing in turn, allow, use carplay

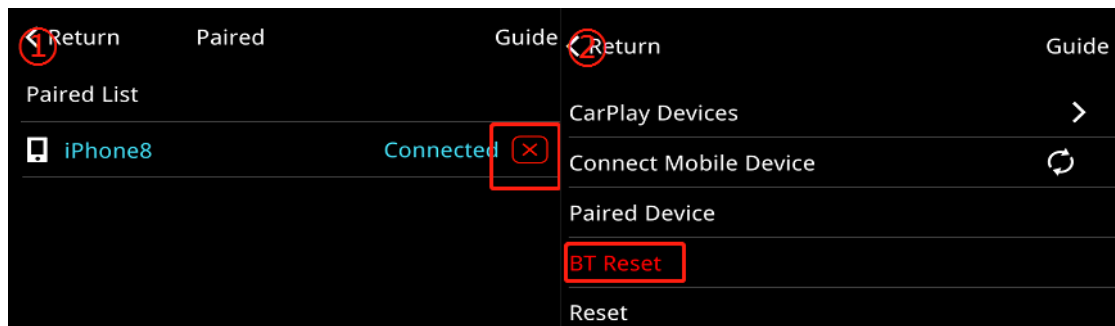


Wireless carplay car terminal pairing connection steps:

1. Turn on WiFi on your mobile phone
2. Enable bluetooth on the mobile phone and stay on the Bluetooth screen
3. Open the terminal and enter WirelessDev
4. Enter the device search of the first icon on the vehicle terminal
5. The bluetooth device on the mobile phone was found on the vehicle terminal
6. The vehicle and the engine find the corresponding device
7. Connect the vehicle and the machine to the corresponding devices searched
8. The mobile terminal will pop up in turn to select pairing, allowing the use of carPlay vehicle



If the wireless carplay fails to connect: 1. Tap the carplay Bluetooth or wifi on the mobile phone 2. Clear the Bluetooth devices on the mobile phone and the car, and then pair the connection (as shown in Figure ①) 2. Go to WirelessDev to reset the Bluetooth, And then pairing connection (as shown in Figure ②) 3. Go to the mobile phone to restore the mobile phone network 5. Check whether the carplay on the mobile phone is turned on (settings-screen time-content and privacy access permissions-allowed apps) 6.siri Whether the permissions are all open 7 Check if there is a problem with the antenna if necessary



Wireless CarPlay disconnect method: disconnect from mobile phone and disconnect from car

Disconnect on the mobile phone: directly turn off the mobile wifi

Disconnected from the car terminal: Enter

WirelessDev---Device Management, click the connected mobile device

Wired CarPlay connection method:

1. First go to the settings of the mobile phone and turn on the siri permission
2. Check whether the carplay on the mobile phone is turned on (Settings - Screen Time - Content and Privacy Access - Allowed APPs)
3. One end of the Apple data cable is inserted into the USB cable on the decoder, and the other end is inserted into the charging port of the mobile phone.
4. The mobile phone pops up to allow the use of carplay, select "Allow", and select "Use only USB" in the next step

Carplay operation method:

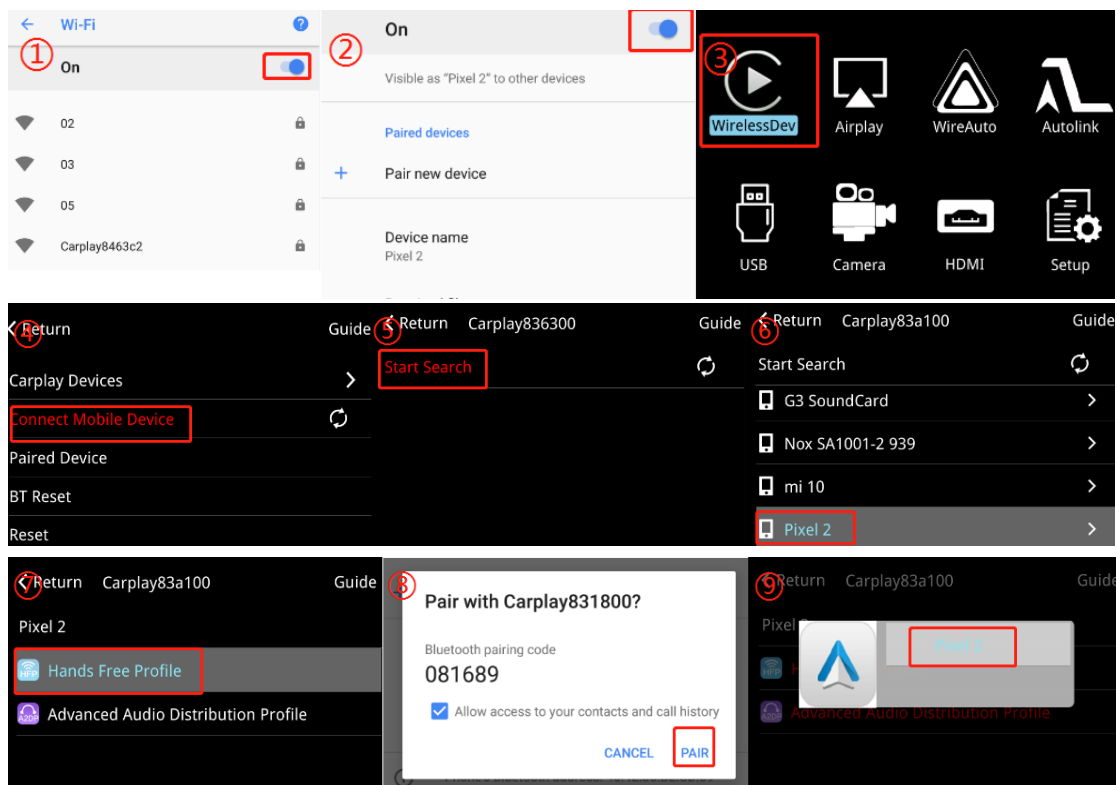
1. To move between carplay icons, you need to use left and right rotation (knob: left or right; joystick: left or right; touchpad: left or right swipe)
2. The up and down songs on the steering wheel can control the up and down functions in the music APP in carplay
3. Short press the voice key on the steering wheel to wake up the Siri voice of carplay (or long press the confirmation key for 5S on any interface of carplay to wake up the Siri voice)
4. Short press the phone button on the steering wheel to connect the call

2.2 Wireless/Wired Android Auto function introduction

Android [Auto\[1\] is](#) Android function specially designed for cars launched by Google; before using it, please go to the Google play store, download the Android Auto APP, and install it; after successfully installing the Android Auto APP, open this APP, and you will be prompted to download Install Google play music, Google map, Google search, Google text-to-speech, etc. Currently only Google phones and Samsung's new phones support the wireless Android Auto function

Wireless Android Auto connection steps:

1. Turn on WiFi on the mobile phone
2. Turn on Bluetooth on the mobile phone, and stay on the Bluetooth interface
3. Select the car and enter the Wireless Dev APP
4. Enter the Bluetooth search interface on the car and machine
5. Search for the car and machine endpoint
6. Car and machine Select and enter the searched device at the end of the vehicle
7. Choose any one of the items on the vehicle end to perform pairing
8. A pairing request pops up on the phone end, select pairing
9. A connection dialog box appears on the end of the vehicle end, press the enter key to enter



Wireless Android Auto connection steps:

1. Select the WireAuto APP on the car terminal
2. Enter the WireAuto connection interface
3. The decoder and the mobile phone are connected via a USB cable

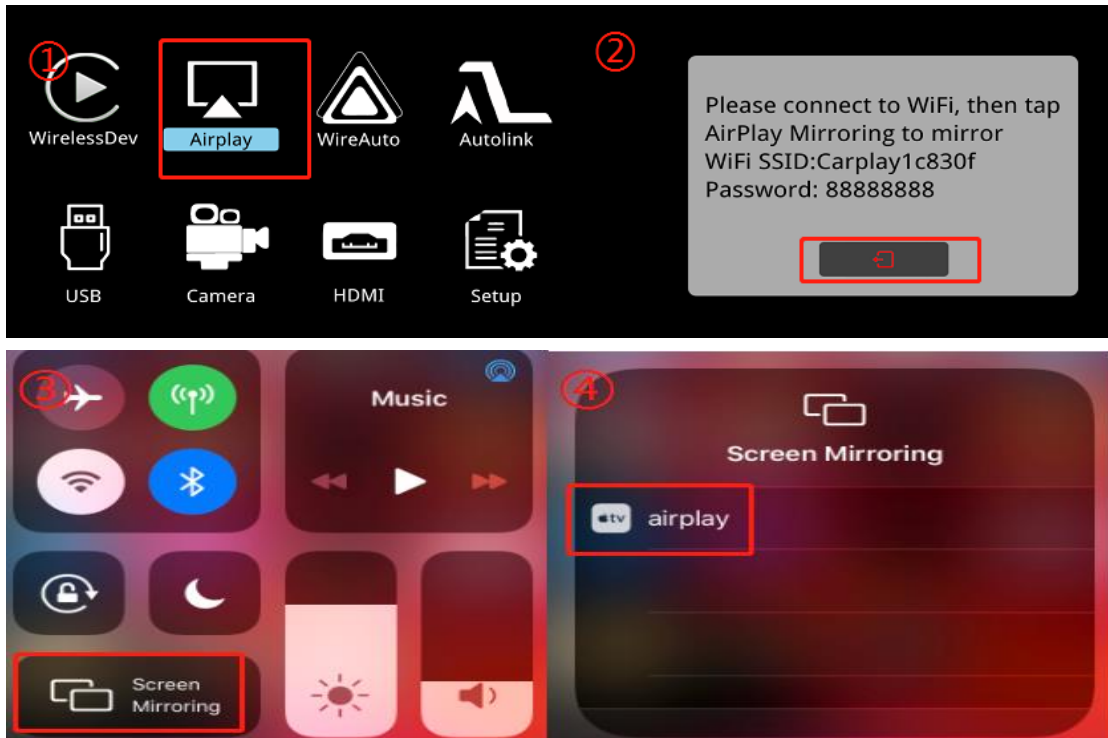
Android Auto operation method:

Car machine terminal operation, use the knob, up, down, left and right keys and return key operation

2.3 Introduction to Wireless AirPlay/Wired Autolink

Wireless airplay connection steps:

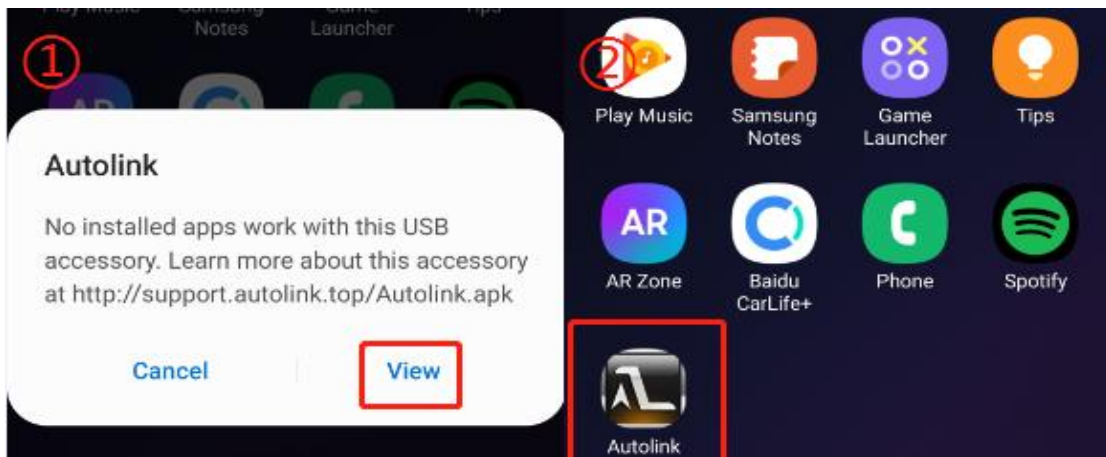
1. Click and enter the main interface Airplay interface 2. Turn on WiFi on the mobile phone 3. Search the WiFi name of the decoder on the mobile phone, and enter the password 3. Swipe the screen up and down on the mobile phone and find the screen mirroring in the task bar 4. Click connect to search WiFi device



Airplay operation method: mobile phone operation

Wired Autolink connection steps:

1. Click and enter the main interface Autolink interface 2. Plug one end of the Android phone data cable into the USB cable on the decoder, and the other end into the phone charging port 3. The phone prompts and enters the browser to download the Autolink APP and install it (as shown in the figure) 1) 4. Insert the Android phone data cable into the decoder USB 5. At this time, go to the mobile phone and select to open all the prompt permissions (as shown in Figure 2) 6. Unplug the data cable



2.4 Youtube function introduction

1. Select and enter Youtube on the car terminal 2. Search for wifi on the car terminal 3. Connect to the car terminal and search for wifi 4. After the car terminal is connected to wifi, select "Youtube Start" with the blue cursor 5. Connect the car terminal to wifi After success, enter the account and log in to the QR code (YouTube subscription function) 6. Open Google Chrome on the mobile phone, open the camera to scan the QR code on the car side 7. Click on the mobile phone and enter "google.com/device", web page 8. Mobile Enter the random number of "usercode" in the QR code interface of the car terminal 9. Log in to the Google account on the mobile terminal 10. Access the Google account on the mobile terminal GVideo and select "Allow" 11. The mobile terminal prompts that the device is successfully connected 12. The car terminal confirms key to enter the YouTube function ("Subscribe" in the upper right corner can be a favorite video)

Youtube operation method: You need to use the left and right function buttons from the left category bar to the right video content, and you need to use the up and down function buttons to search and subscribe from the video content to the top



2.5 USB HD playback function introduction

First insert the U disk with video and music, then click and enter the USB interface of the main interface of carplay. USB currently only supports video and music functions.

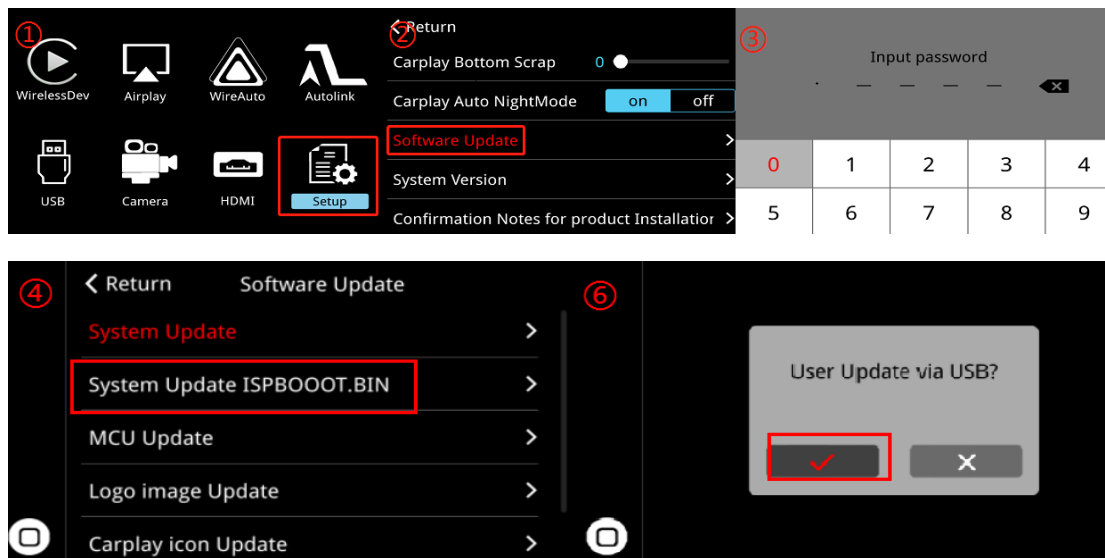
Video supported formats: 3GP, MP4, M4V, AVI, MOV, MKV, DIVX, DAT, RM, RMVB

Audio supported formats: MP3, WMA, WAVE, Ogg, FLAC

2.6 Firmware Upgrade Introduction

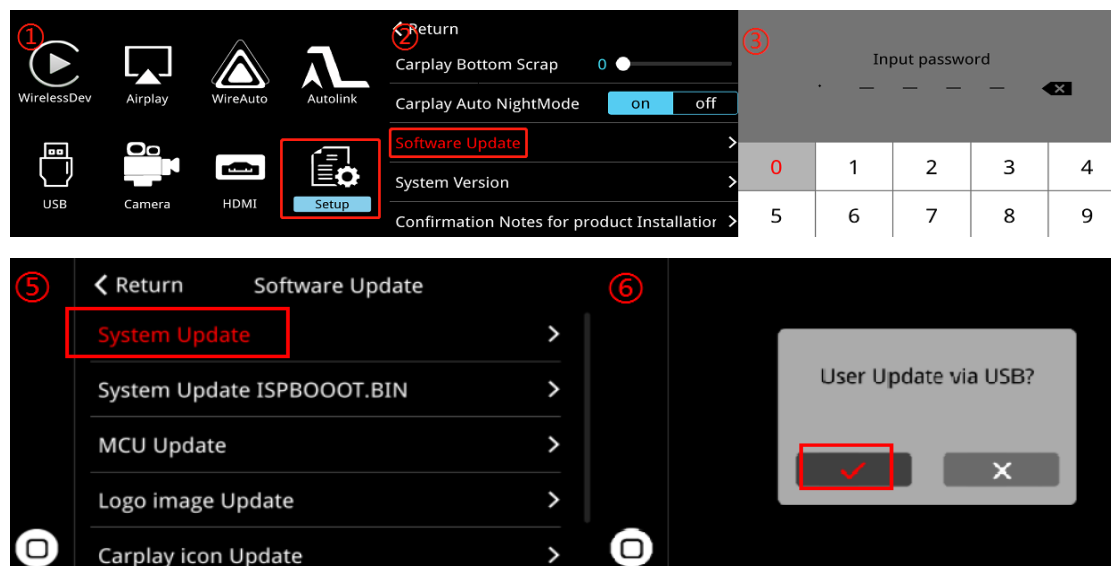
All Carplay upgrade steps:

1. Copy the carplay upgrade file "ISPBOOOT.BIN" to the root directory of the U disk
2. Insert the U disk into the USB port of the decoder
3. Enter the settings of the installation interface
4. Select in the settings menu and enter the user upgrade
5. Enter the corresponding password (2863)
6. Enter the user upgrade interface, choose to enter the system upgrade ISPBOOOT.BIN
7. After the upgrade dialog box pops up, select "✓" to enter the upgrade mode
8. The entire upgrade process takes about two minutes (please see the legend)



Carplay part upgrade steps:

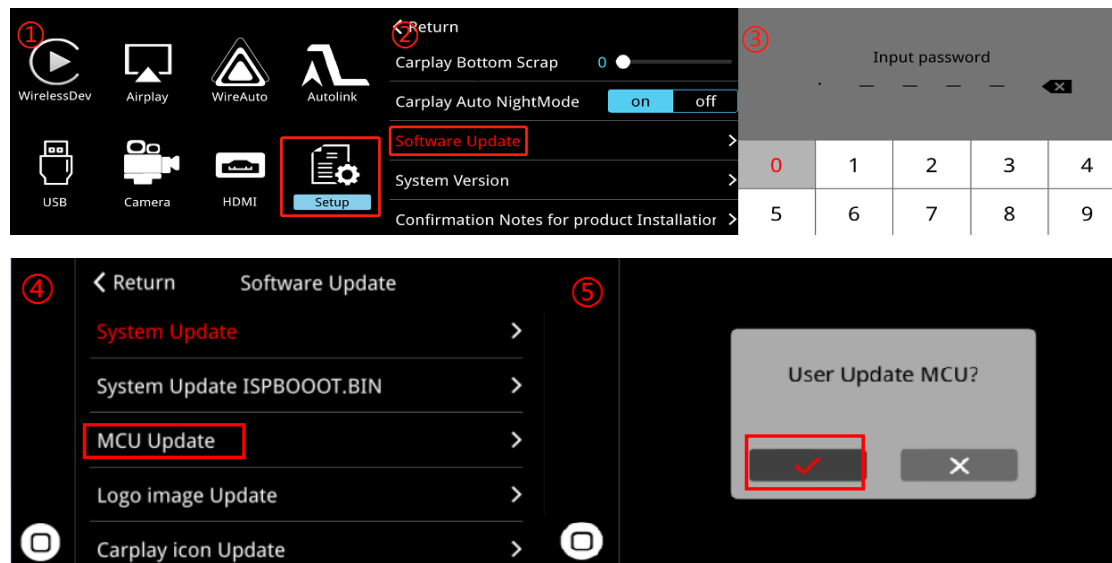
1. Copy the carplay upgrade file "GEMINI_PACK.BIN" to the root directory of the U disk
2. Insert the U disk into the USB port of the decoder
3. Enter the settings of the installation interface
4. Select in the settings menu and enter the user upgrade
5. Enter the corresponding password (2863)
6. Enter the user upgrade interface, select system upgrade
7. After the upgrade dialog box pops up, select "✓" to enter the upgrade mode
8. The entire upgrade process takes about two minutes (please see the legend)



MCU upgrade steps:

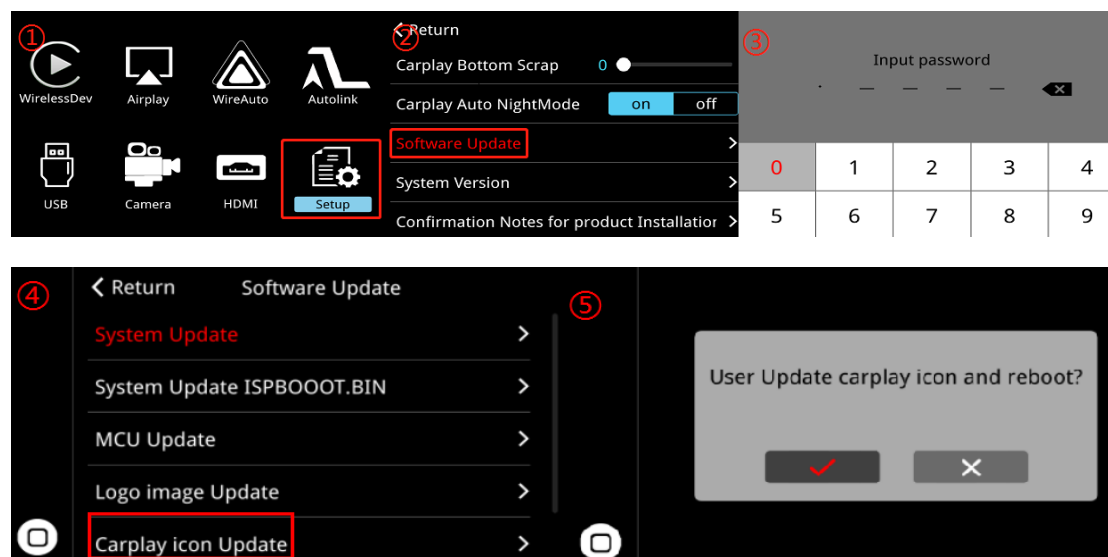
1. Copy the MCU file "Upgrade.BIN" into the root directory of the USB flash drive
2. Insert the USB flash drive into the USB interface of

the decoder 2. Enter the installation interface settings 3. Select and enter the user upgrade in the settings menu 5 . Enter the corresponding password 6. Enter the user upgrade interface, select MCU upgrade 7. After the upgrade dialog box pops up, select "v" to enter upgrade mode 8. The entire upgrade process needs to wait about one minute 9. Long press the MENU button to switch to carplay Install the interface, wait for the main interface before you can unplug the U disk



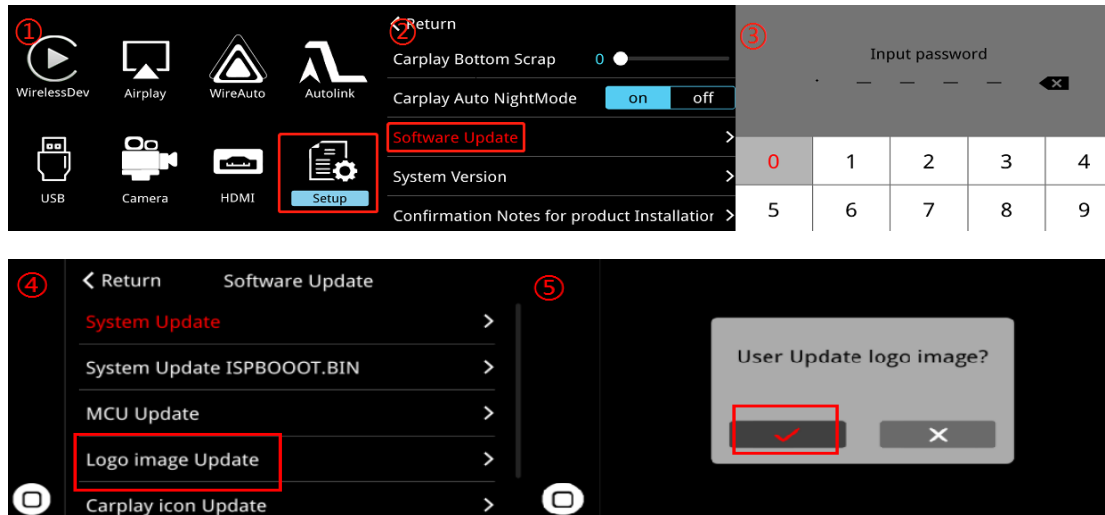
Carplay icon upgrade steps:

1. Copy the 250x250 "cp_back.png" upgrade image file into the root directory of the U disk 2. Insert the U disk into the USB port of the decoder 3. Enter the settings of the installation interface 4. Select and enter in the settings menu User upgrade 5. Enter the corresponding password 6. Enter the user upgrade interface, select the carplay icon to upgrade 7. After the upgrade dialog box pops up, select "✓", you can see the decoder restarts at this time (please see the legend)



Carplay boot logo upgrade steps:

1. Copy the 24-bit color map "logo.bmp" image file of the upgrade file 800x480 into the root directory of the U disk 2. Insert the U disk into the USB interface of the decoder 3. Enter the settings of the installation interface 4. In the settings menu 5. Enter the corresponding password 6. Enter the user upgrade interface, select the boot screen upgrade 7. After the upgrade dialog box pops up, select "✓" 7. Restart the decoder boot screen to take effect (please see the legend)



Reverse setting instructions

3.1 Carplay setting reverse function introduction

Reversing camera: sub-decoder reversing (installing a camera) and original car reversing, the default original car reversing;

Function introduction: 1. Support original car reversing; 2. Support installation of camera (NTSC: 720*576 PAL: 720*480); 3. Installation of 360 split machine (cvbs input); 4. Installation of 360 all-in-one machine (LVDS input);

Reversing detection line: on/off, default off;

Function introduction: In order to reverse the car and cannot enter and reverse the car, it is necessary to connect the purple detection line on the usb line to the 12V positive pole of the reversing tail light, and set-up the line detection during reversing;

Reversing display track: on/off, default on;

Function introduction: For the installation of the camera, the track display is required; if the 360 split machine is installed, this option needs to be turned off;

Reversing display radar: on/off, default on;

Function introduction: For installing a camera, radar display is required; if a 360 split machine is installed, this option needs to be turned off;

Front view display time: 0–15 seconds, the default is 0 seconds;

Function introduction: This option is the time displayed by the vehicle condition in front of the vehicle, the default is not displayed, this option is optional

When a front-view camera is installed on the car, you can turn on the front-view display time switch. For example, the display time is 5 seconds. When you finish reversing, the screen will display the situation in front of the vehicle for 5 seconds. After 5 seconds, the screen will switch back to Carplay interface